



Card Clothing & Services, Midwest

11421 Kiley Drive • Huntley, IL 60142 • USA

CCS ELECTRICAL CONTROL PANEL FEATURES

TYPICAL HARDWARE

- UL/CE Compliant
- Hoffman – Rital – Saginaw or like Nema 12 enclosures painted factory gray
- Enclosure air conditioning and lighting
- Siemens S7-315 PLC w/12" Comfort Touch Wide Screen
- Siemens lockable flange disconnect and individual disconnects where needed
- Siemens main circuit breaker sized as needed
- Siemens Micromaster 440 VFD's and IEC AC motor controls
- Siemens 22 mm start/stop/alarm clear buttons with engraved phenolic legend plates
- Siemens emergency stop button
- Duplex (external) receptacle for laptop and test equipment
- Voltage filter to protect PLC power supply on 120vac control systems
- Audible alarm horn and silence button feature
- API brand Load cell amplifiers

TYPICAL FEATURES

- Multi level password protection
- Remote access for troubleshooting and program changes via customer supplied VPN
- CAD CAM machine graphics with live machine animation
- Multilingual help screens
- Self diagnostics with alarming and alarm history log stored on SD card
- VFD motor speed and amps display
- SD card program storage
- Active blend line weight control with trickle speed feature for more accuracy
- Weight trending and graphs
- Recipe management with operator set up screen for custom recipes
- Card feed roll metal detection
- Card Speed sensor to prevent overloading
- Motion detecting opener and card safety enclosures
- CAD CAM panel drawing including field wire drawing – Hard and digital copy

NOTE: TYPICAL HARDWARE/FEATURES MAY CHANGE FROM JOB TO JOB



BLEND LINE CONTROL PANEL



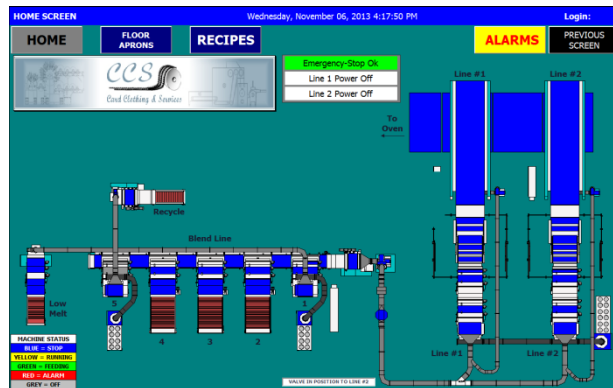
BLEND LINE CONTROL PANEL



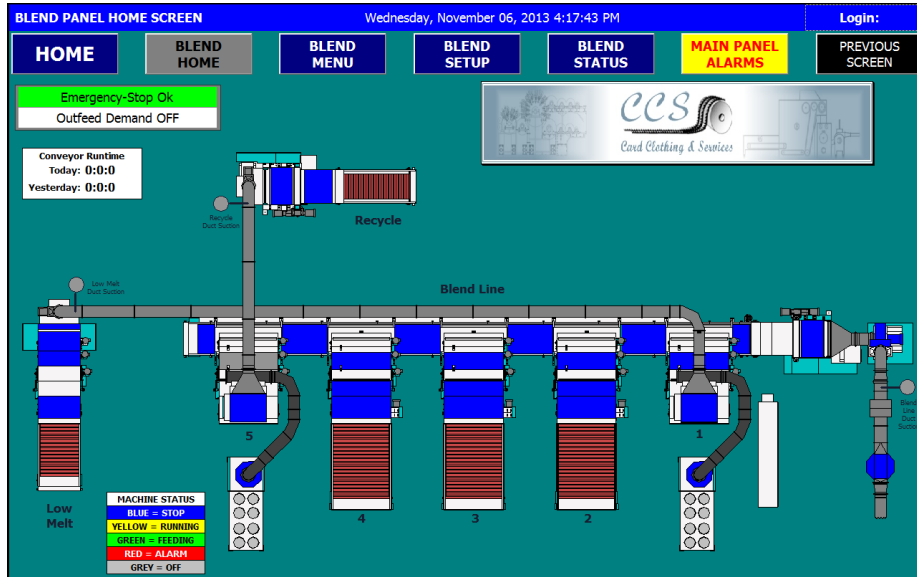
AIR CONDITIONED CARD PANEL



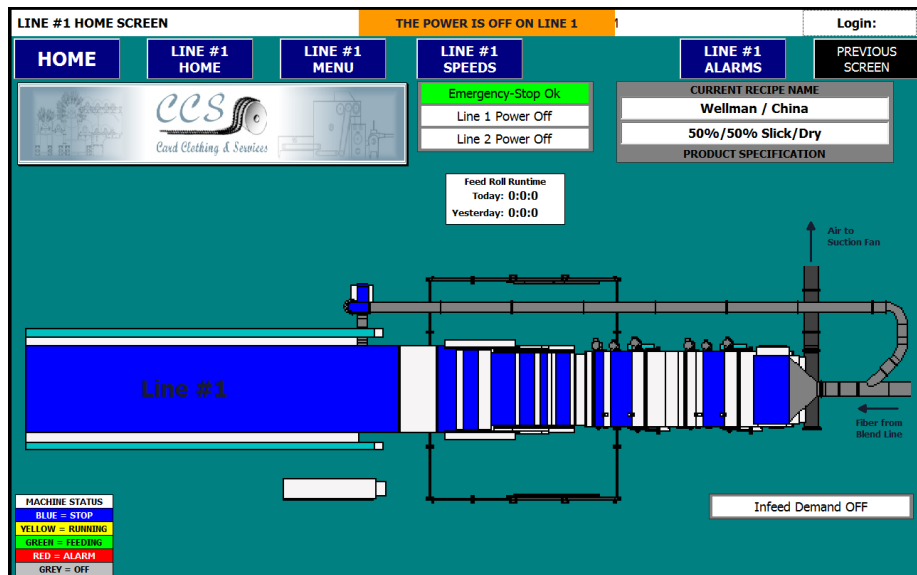
CARD PANEL WITH TOUCH SCREEN



HOME SCREEN SHOT INCLUDING BLEND AND (2) CARDS



BLEND LINE SCREEN SHOT



CARD LINE SCREEN SHOT